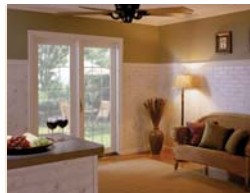


INSTALLATION INSTRUCTIONS

Complete instructions for all FashionWall products.



MATERIALS

General Equipment:

- Safety Glasses
- Padded worktable and sufficient workspace
- Pencil Compass (for scribing)
- Caulking gun
- Shims
- Circular saw, power rotary cutter or hand saw – with fine tooth blade
- Hammer
- Paneling nails and nail set

Adhesive:

Be sure to follow manufacturer's instructions.

- AquaTile & PanelBoard requires a high quality, solvent-based trowel grade tileboard or construction adhesive (DO NOT use water based or FRP adhesive).
- Designers, EarthStones, PegPanels & Woodgrains require a high quality solvent-based paneling or construction grade cartridge adhesive.

Additional Materials for AquaTile Panels Only

- File or sandpaper block
- 3/16" v-grooved or v-notched trowel
- Mineral Spirits (to clean excess adhesive)
- 100% silicone caulk
- Painter's grade removable masking tape (to achieve straight and even caulking)

Additional Materials for PanelBoard Only

- 3/16" v-grooved or v-notched trowel
- Mineral Spirits (to clean excess adhesive)
- File or sandpaper block

If cutting out spaces for electrical boxes, etc.

- Chalk – for outlining electrical boxes OR BLIND MARK™ (discount available through www.decpnls.com)
- Drill
- Keyhole saw or sabre saw – with fine tooth blade

If using Mouldings

- Mitre box – to trim mouldings

Recommended Measuring/Leveling Equipment

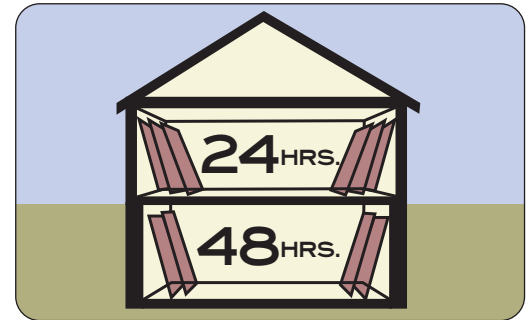
- Tape measure
- Carpenter's Level
- Carpenter's square

STEP 1: CONDITION PANELS

Check panels for color matching and quality before applying.

Place panels in the room where they will be installed. Let them sit 24 hours for above grade and 48 hours for below grade installations.

Lay along 8ft edge and stack out from the wall using shims as spacers between the panels. This exposes all four sides to the air.



STEP 2: PREPARE PANELS

Interior Walls:

Make sure that all surfaces are firm, clean and dry.

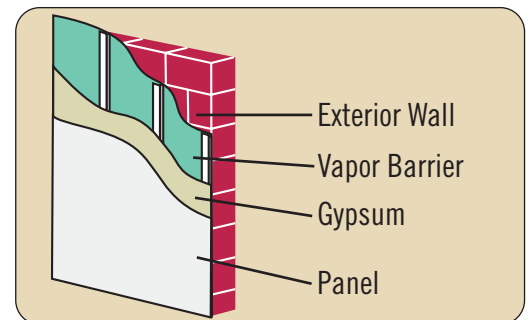
Apply panels to solid walls only (not to furring strips or studs), with the following exceptions:

- 1/4" EarthStones, 5mm Woodgrains, and PegPanels can also be installed directly to stud framing

Exterior Walls or Below Grade:

Use a 4-mil. or greater polyethylene vapor barrier.

* Use furring strips for perforated panels.



STEP 3: DRY FIT PANELS

If panels have a design pattern make sure the pattern is placed in the same direction on all panels (flowers facing up, dark stripes on left side, etc.)

Above Grade: Allow 1/16" (U.S. Dime thickness) between panels to the left and right (along the 8ft edge). Use shims to leave 1/8" at the top and bottom of the panels.

Below Grade: Allow 1/16" (U.S. Dime

thickness) to the right and left of the panels (along the 8ft. edge). Use shims to leave 1/4" gap at the top and bottom of the panels.

Alcove & Shower areas (AquaTile only):

Use 1/8" shims under the panel to allow gap for caulking. Place panels in order to minimize the number of vertical seams. Use in shower stalls no wider than four feet, eliminating panel joints except in corners.

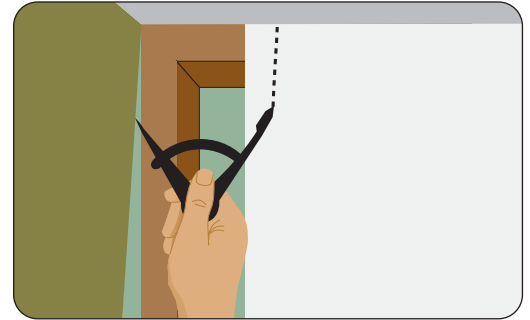


STEP 4: CUT PANELS TO FIT

Always start installation in a corner. Use shims at floor level (to level panel and to allow for the required space at the bottom of the panel).

Place plumb lines on the wall and scribe and trim if needed to make panel edge fall on the plumb line.

To reduce chipping of surface, cut panels face up with a fine-tooth handsaw; or face down with a fine-tooth portable power jigsaw or circular saw.

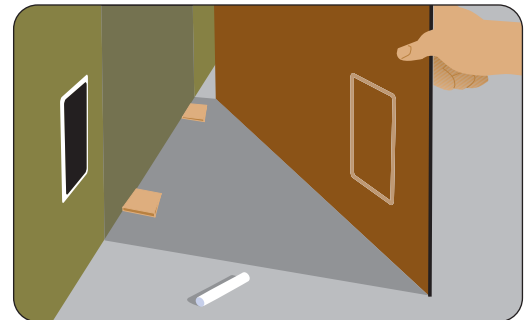


To cut around electrical boxes turn off the power and unscrew the protective faceplate.

Run chalk around the box edges and carefully position the panel in its proper

space. Press panel firmly over the box area, which transfers the outline to the back of the panel.

Or use the BLINDMARK™ (available at www.decpanels.com)

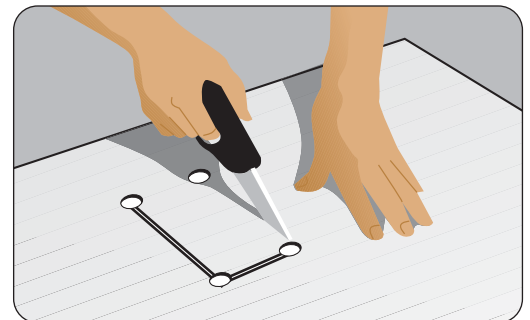


Make small holes just inside the corner of the outline by using a power drill (drill from the back of the panel).

Enlarge holes from the front and use a saw to make the cut out. The cut out can be up to 1/4" oversize and still be

covered by the switch plate.

For AquaTile panels, smooth any chipped edges with a file or sandpaper so edges can be completely caulked. For extra protection, paint cut edges with appliance-white enamel.



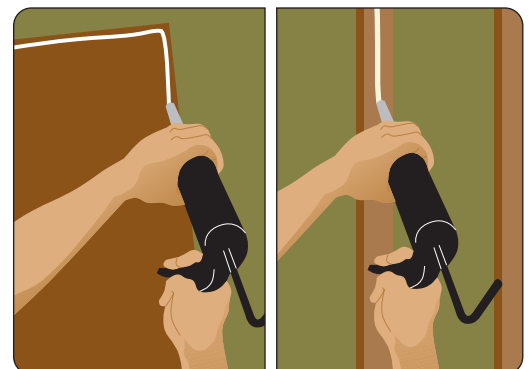
STEP 5: APPLY ADHESIVE

For Woodgrains, EarthStones, Designers, & PegPanels:

Use a solvent based cartridge adhesive suitable for wall paneling (Water-based or FRP adhesive will not work). For proper adhesive application be sure to follow the manufacturer's recommended safety and application instructions. Be sure to follow required flash times.

If applying to a solid wall, extrude a 1/4" bead around the perimeter of the panel and on 12" vertical lines.

If applying to studs or furring strips, extrude a 1/4" bead of adhesive directly to studs/furring strips.



STEP 5: APPLY ADHESIVE (CONTINUED)

For AquaTile & PanelBoard:

Use a high quality, solvent-based trowel grade tileboard or construction adhesive.

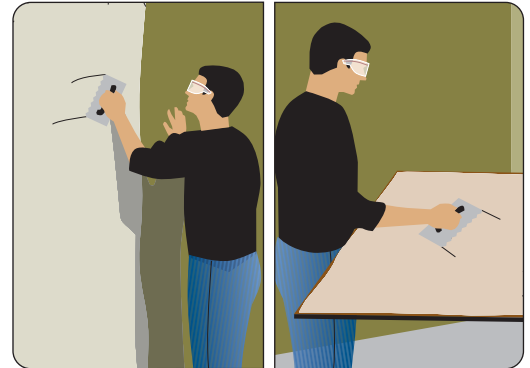
(Do not use water based or FRP adhesive, as they will not work). For proper adhesive application be sure to follow the manufacturer's recommended safety and application instructions.

Use a flat trowel, and apply a thin layer (also called a skin coat) to the wall

area you will be covering with the panels. Go directly to next step to apply adhesive to the wall panels.

Using a 3/16" notched trowel, held at a 45° angle, thoroughly cover the back of the wall panel with the adhesive.

Before adhering the panel to the wall, wait 5-10 minutes to allow excess solvents to evaporate. Adhesive should be tacky but not dry.



STEP 6: ADHERE PANELS

Be sure shims are in place to keep panels at required level. Remember to allow 1/16" between panels to allow for expansion. Position the panel in the correct location and adhere the panel to the wall/studs by pressing the panel firmly.

Wipe off any excess adhesive on the

surface with mineral spirits (Do not use lacquer thinner).

For Woodgrains, EarthStones, and Designers ONLY: Use a combination of gluing and nailing for best results.

For PegPanels use glue and drywall screws for added strength.

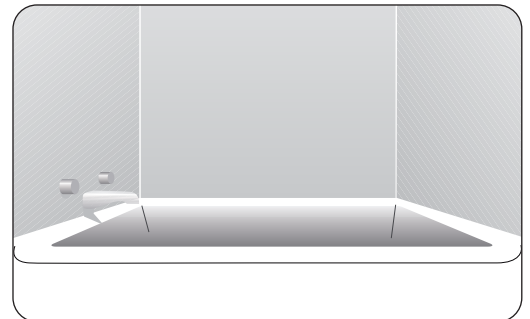


For AquaTile ONLY: Before caulking a tub alcove, fill tub with water. This may cause it to settle slightly, so that the gap above the tub can be properly sealed with the caulk.

Use 100% silicone caulk to thoroughly caulk all seams and edges around the panels, around and behind all fixtures

and in between the seams. To achieve straight and even caulking, use a low tack painter's grade removable masking tape along panel edges and openings. Remove tape right after caulking is complete – do not wait for caulk to cure.

Do not nail AquaTile panels.



STEP 7: CLEAN & ENJOY

Once the installation is completed the panels may be cleaned when needed by wiping with mild soap and water. Do not use abrasive cleaners on your new wall panels.

